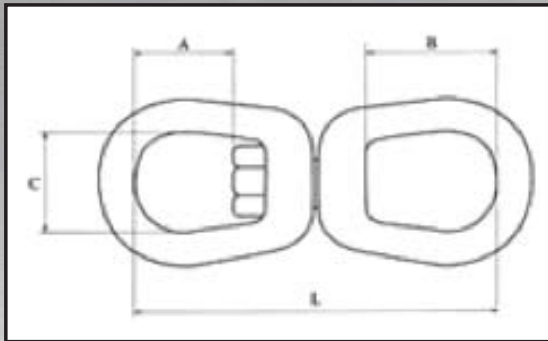




## Swivel - Eye & Eye

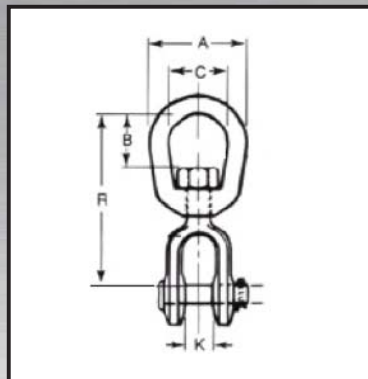


- Material: Forged Steel, quenched and tempered
- Standard: RR-C-271F, Type VII, Class 2
- Finish: Hot Dip Galvanized.
- Design Factor: 5:1
- Identification: Trademark, Size/WLL

Rope (in)	WLL (lb)	Wt./ea. (lb)	Dimensions (in)				Price / ea.	Part Number
			A	B	C	L		
3/8	2250	0.71	0.94	1.50	1.25	4.31		6-3/8SWLEE
1/2	3600	1.32	1.31	2.00	1.50	5.44		6-1/2SWLEE
5/8	5200	2.49	1.56	2.38	1.75	6.56		6-5/8SWLEE
3/4	7200	4.02	1.75	2.43	2.00	7.19		6-3/4SWLEE
1	12 500	8.95	2.31	3.25	2.50	9.63		6-1SWLEE
1 1/4	18 000	16.37	2.89	3.89	3.13	11.44		6-1-1/4SWLEE
1 1/2	45 200	45.79	4.40	6.11	3.95	17.51		6-1-1/2SWLEE

These swivels are positioning devices and are not intended to rotate under load.

## Swivel - Jaw & Eye



- Material: Forged Steel, quenched and tempered
- Standard: RR-C-271F, Type VII, Class 2
- Finish: Hot Dip Galvanized.
- Design Factor: 5:1
- Identification: Trademark, Size/WLL

Rope (in)	WLL (lb)	Wt./ea. (lb)	Dimensions (in)					Price / ea.	Part Number	
			A	B	C	K	R			Length
3/8	2250	0.66	2.00	0.94	1.25	0.63	3.63	4.75	STOCKED	6-3/8SWLJE
1/2	3600	1.34	2.50	1.31	1.50	0.75	4.50	6.06	STOCKED	6-1/2SWLJE
5/8	5200	2.48	3.00	1.56	1.75	0.94	5.31	7.31	STOCKED	6-5/8SWLJE
3/4	7200	3.88	3.50	1.75	2.00	1.13	6.06	8.31	STOCKED	6-3/4SWLJE
1	12 500	9.84	4.50	2.31	2.40	1.75	8.56	11.69	STOCKED	6-1SWLJE
1 1/4	18 000	15.75	5.69	2.89	3.13	2.06	9.44	13.13	STOCKED	6-1-1/4SWLJE
1 1/2	45 200	54.75	7.00	3.88	4.00	2.88	14.25	20.84	STOCKED	6-1-1/2SWLJE

These swivels are positioning devices and are not intended to rotate under load.

Swivels